

CCS Technical Documentation

NPM-10 Series Transceivers

Disassembly/Assembly

Contents

	Page No
Disassemble the NPM-10 Transceiver.....	5
Preparation for Disassembly	5
Disassembly Tools	5
ESD Protection.....	5
Assembly	5
1. Remove B-cover	6
2. Remove Battery	6
3. Remove SIM card	6
4. Remove A-cover	7
5. Remove screws (Torx #6)	8
6. Remove Lightguide Assembly	8
6.1 Remove Metal frame and Earpiece	9
7. Remove the PWB Assembly	10
7.1 Remove shielding lids	10
8. Remove components from D-cover Assembly	11

Disassemble the NPM-10 Transceiver

Preparation for Disassembly

Disassembly Tools



Shown left to right: Torque-limiting screwdriver (torque set at 28N-cm), fiberglass soldering aid, and T6 Torx+ driver.

ESD Protection



Some form of ESD protection should be used when handling the PWB and other electronic components. The photo above shows a wrist strap, which can be grounded to a bench. This or some other form of ESD protection should be used when handling the phone.

Assembly

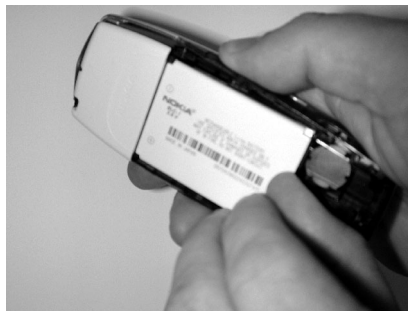
Use the Disassembly Instructions, which follow, in the reverse order.

1. Remove B-cover



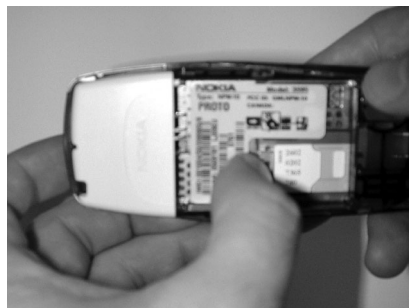
- 1 Press and hold the release button.
- 2 With other hand, place thumb on logo badge and push B-cover towards the top of the phone.
- 3 Once B-cover is pushed forward, lift it off to remove.

2. Remove Battery



Lift the battery out by lifting from the bottom of the battery compartment.

3. Remove SIM card



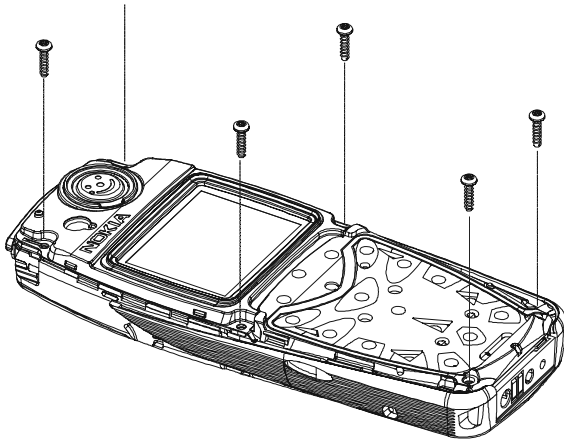
- 1 Press plastic spring down.
- 2 Place the thumb from the other hand on SIM card. Press and slide the SIM card towards the top of the phone.

4. Remove A-cover

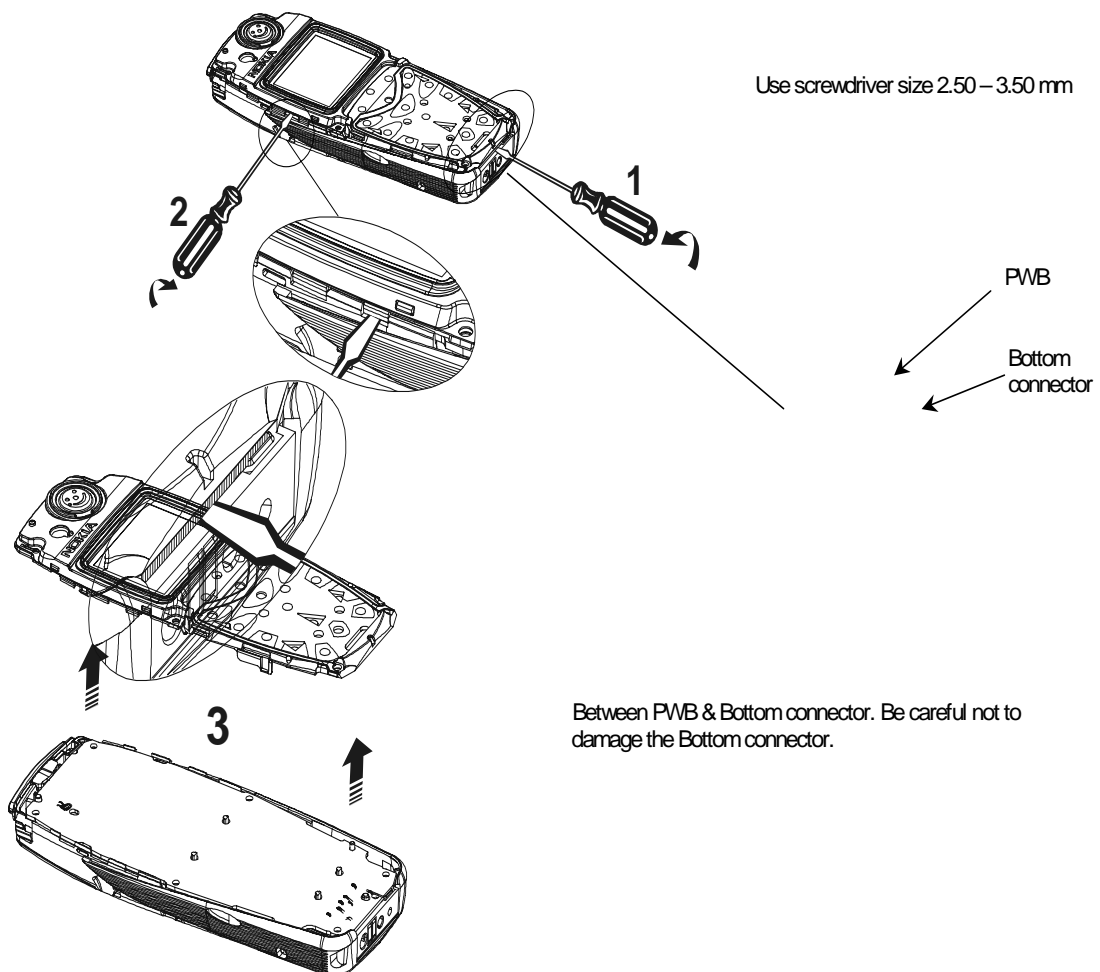


Place thumb under the edge of the A-cover and fingers on top. Pull the A-cover gently until a snaps deactivates.

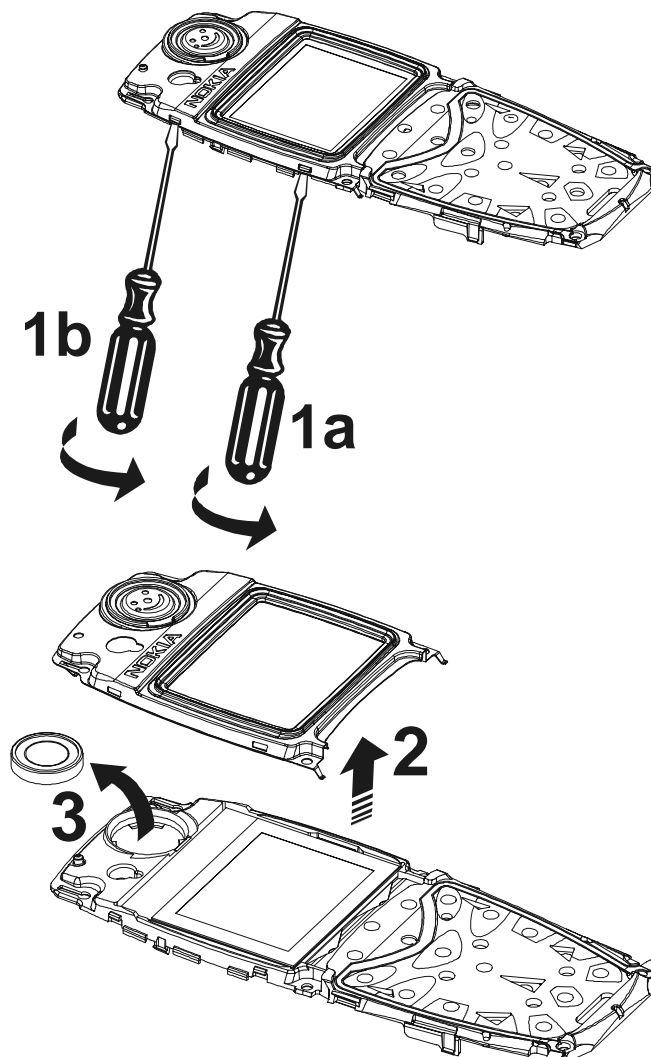
5. Remove screws (Torx #6)



6. Remove Lightguide Assembly



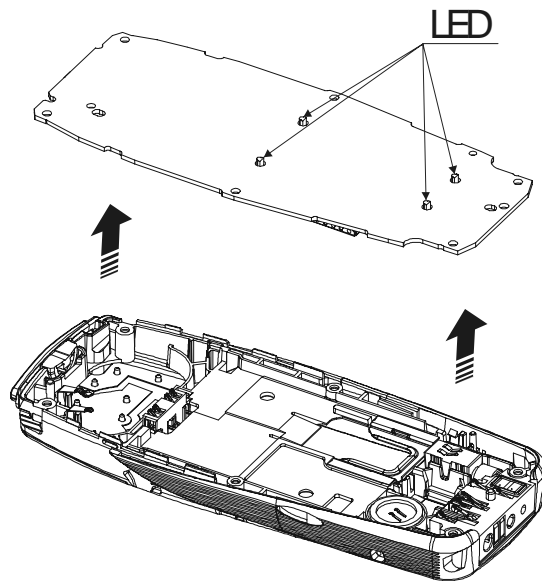
6.1 Remove Metal frame and Earpiece



Use screwdriver size 2.50 – 3.50 mm.

- 1 Turn screwdriver at snaps, only on one side (#1a and 1b above).
- 2 When removing the metal frame, be careful not to damage the four springs in the corners (#2 above).
- 3 Remove the Earpiece (#3 above).

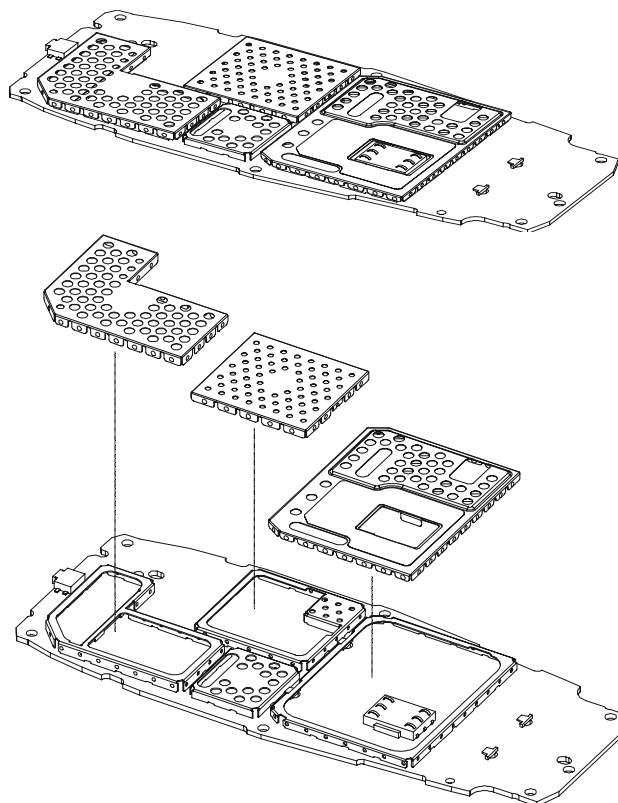
7. Remove the PWB Assembly



Remove PWB assembly.

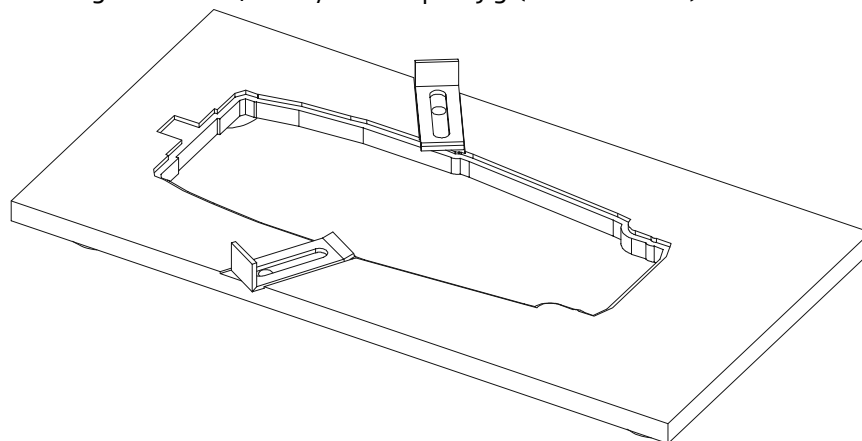
Place PWB on ESD table with LED upwards.

7.1 Remove shielding lids



Remove shielding lids, as shown above. Do not re-use shielding lids once removed.

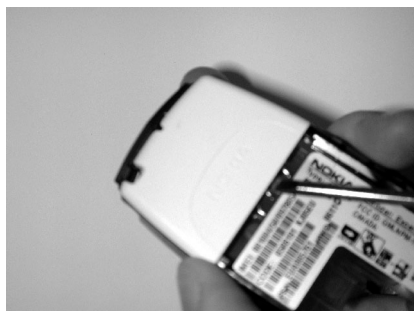
When working with PWB, always use repair jig (shown below).



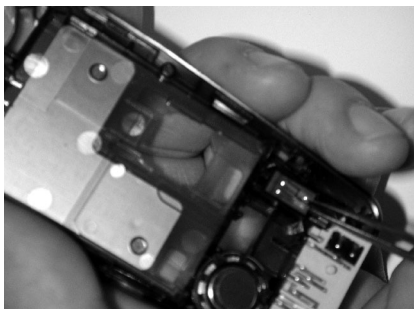
8. Remove components from D-cover Assembly

The following components are removable:

- 1 Power key
- 2 Battery connector



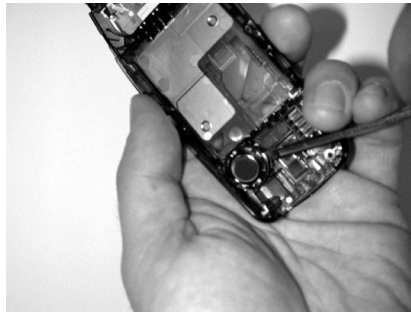
- 3 Vibra assembly



- 4 Bottom connector



5 MALT speaker



Use screwdriver size 2.50 – 3.50 mm.

Remove MALT speaker by turning the screwdriver as shown here.